

## 4.3 Ezi PREMIX MODIFIED RENDER 103

### MODIFIED PREMIX CEMENT-SAND RENDER FOR WALL RENDERING



#### DESCRIPTION

Ezi PREMIX MODIFIED RENDER 103 is a modified, high performance cement-sand rendering mortar comprising Ordinary Portland Cement, Graded & Washed Sharp Silica Sand and Special Additives. Conforming to the requirement of: BS EN 1015.

#### USAGE

(i) Ezi PREMIX MODIFIED RENDER 103 is specially developed for:



**Wall Rendering/Levelling Mortar**  
onto concrete wall, brick wall and etc., as a render coat underneath to receive Ezi Tile Adhesive, Ezi Plaster Base/Finish, paint or etc. (also suitable for use as a patch repair mortar).

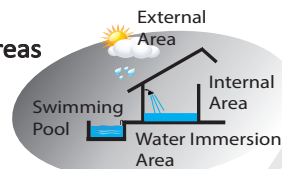
(ii) Ezi PREMIX MODIFIED RENDER 103 Suitable to use on:

#### Internal/External, Wet/Dry Areas

including water immersion area (e.g. swimming pool).



For very demanding situations where better performance are required, use of **Ezi MIX SBR BOND** or **Ezi MIX MULTI-PLUS** (latex admixture) with **Ezi PREMIX MODIFIED RENDER 103** is recommended to further enhance its physical properties.



(iii) Ideal for wall render at thickness of:



- Recommended render between **5-15mm** at **1 coat**
- For greater thickness from **15-25mm** recommend to apply in 2 separate layers
- For thickness up to **35mm** or more recommend to apply in 3 separate layers

#### PERFORMANCE & BENEFITS

- (i) Greater Adhesion Strength
- (ii) Greater Flexural Strength
- (iii) Good Abrasion Resistance
- (iv) User Friendly & Good Workability
- (v) Prevent Mixing Error
- (vi) Reduce Drying Shrinkage
- (vii) Minimise Efflorescence

#### PRODUCT INFORMATION

Name	: Ezi PREMIX MODIFIED RENDER 103
Packing	: 40 KG
Shelf Life	: 12 Months in Cool & Dry Condition
Appearance	: Grey Semi-Coarse Powder
Dry Solid Content	: 100%
pH Value	: Alkaline
Toxicity Hazard	: No
Inflammability	: No

#### APPLICATION DATA (Tested at approx. 25 °C)

Mixing Ratio	: 22pbw. of water for 100pbw. of powder (8.8 litre of water for 40KG of powder)
Consistency of Mix	: Creamy Paste Form
Coverage	: Approx. 1.2 kg/m <sup>2</sup> (for 1 mm bed thickness) Approx. 12 kg/m <sup>2</sup> (for 10 mm bed thickness) Approx. 24 kg/m <sup>2</sup> (for 20 mm bed thickness) Approx. 6.7 m <sup>2</sup> /40kg (for 5 mm bed thickness) (Approx. 72 ft <sup>2</sup> /40kg for 5 mm bed thickness)
Bed Thickness	: Recommended 5 - 15 mm (1 coat) Recommended 15 - 25 mm (2 coats) Recommended 25 - 35 mm (3 coats)
Pot Life	: Approx. 3 hours
Initial Setting Time	: Approx. 10 hours
Final Setting Time	: 24 - 48 hours (depending on atmospheric condition)
Drying Period	: 1 - 2 weeks (12mm of bed thickness)
Application Temperature	: From +5 °C to Normal Ambient Temperature

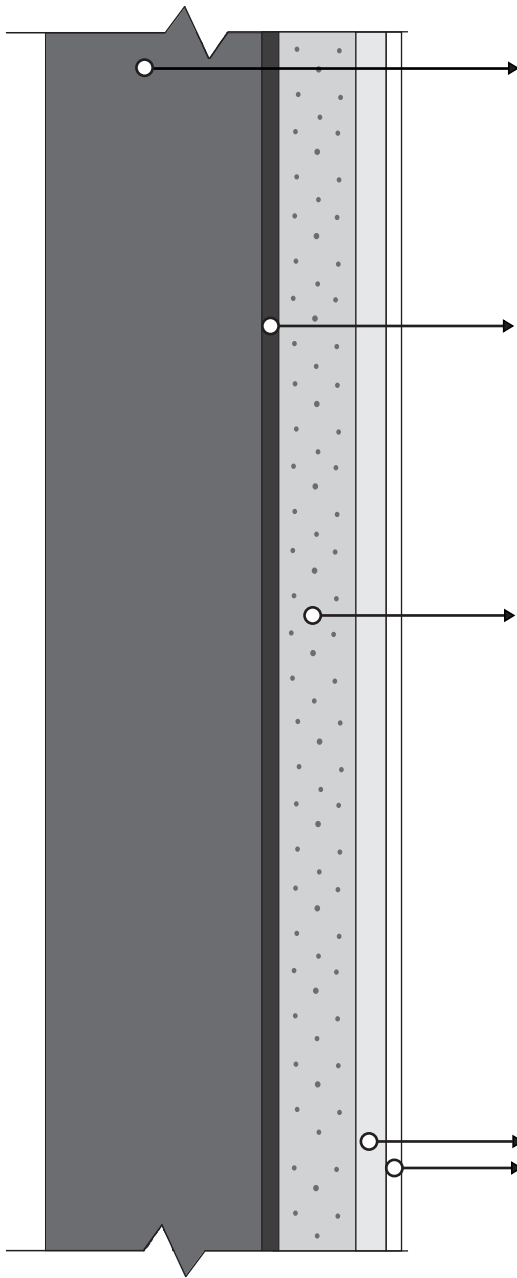
#### TECHNICAL DATA (Tested at approx. 25 °C)

Tensile Strength after 28 days (BS EN 1015-12 : 2000)	: 2.0 ± 0.10 N/mm <sup>2</sup>
Compressive Strength after 28 days (BS EN 1015-11 : 1999)	: 30 ± 1.00 N/mm <sup>2</sup>
Flexural Strength after 28 days (BS EN 1015-11 : 1999)	: 7.0 ± 0.10 N/mm <sup>2</sup>
Resistance to Heat	: +100 °C
Resistance to Frost	: -5 °C
Resistance to Water	: Good
Resistance to Alkalies	: Fair
Resistance to Oil & Solvent	: Fair

Tested in Accordance to the Requirement of BS EN 1015

## INSTRUCTION & METHOD STATEMENT

### METHOD STATEMENT CROSS SECTIONAL DIAGRAM: FOR WALL RENDERING.



#### 1) REINFORCED CONCRETE (RC) WALL / BRICK WALL

- (i) Substrate must be well cured before commencement of rendering.
- (ii) Ensure substrate is dry, sound & free of contamination (e.g. dust, grease, mould release oil, laitance etc).

**Important:** Under extremely dry/hot condition where substrate exhibits an abnormal high degree of water suction, highly recommended to dampen the substrate before commencing rendering.

#### 2) BONDING AGENT (SLURRY BOND COAT)

- (i) Mix 1 part **EziMIX SBR BOND** with 1.5 parts **OPC** (Ordinary Portland Cement)
- (ii) Mix until a thin slurry **Bonding Agent** is obtained.
- (iii) Apply **Bonding Agent** onto RC surface by using brush/roller at thickness not more than 1mm.

**Note:** **Bonding Agent** is highly recommended to apply when rendering onto external areas, swimming pools or onto difficult substrate/dense & impervious substrate. (eg.: waterproofed substrate, concrete etc.)

#### 3) Ezi PREMIX MODIFIED RENDER 103

- (i) Mix **Ezi PREMIX MODIFIED RENDER 103** with recommended mixing ratio.
- (ii) Mix until consistent mortar is obtained.
- (iii) Immediately place onto the RC Wall surface while the **Bonding Agent** is still wet or tacky.
- (iv) Apply mortar under normal approved manner, ensuring that it is well compacted during application.

**Note:** When rendering onto external areas, swimming pools or onto difficult substrates, it is recommended to mix **Ezi PREMIX MODIFIED RENDER 103** with **EziMIX MULTI-PLUS** to replace gauging water.

**Important:** The ideal thickness of renders is 5 - 15mm thick at 1 coat, for greater thickness recommended to apply in 2 separate layer or more. The first layer should be combed to create "keys" and left to dry before the subsequent layer is applied.

#### 4) FOR BETTER/SMOOTHER INTERNAL FINISHING

Apply **Ezi PLASTER BASE & Ezi PLASTER FINISH** before receive paint.



#### 4) FOR OUTSTANDING TILING FINISHING

or

Refer to Ezi range of cementitious tile adhesive.



### MATERIAL SAFETY INFORMATION

A non-toxic, cement-based product which is considered non-hazardous in normal usage. Avoid inhalation, ingestion, skin and eyes contact. For more details, please refer to Ezi Material Safety Data Sheet.

When working with this product, recommended to follow the safety precaution below.



WEAR DUST MASK



WEAR SAFETY GOGGLES



WEAR HAND GLOVES



WEAR SAFETY SHOES



KEEP AWAY FROM CHILDREN

### COMPANY INFORMATION

**MANUFACTURED BY: Ezi MOTARTECH SDN. BHD. (874800-D)**

#### FACTORY ADDRESS

**PENANG** : 1888, Jalan Lahar Bubur, Kepala Batas, 13200, Pulau Pinang.  
**IPOH** : PT990, 2 1/2 KM Off Jln Simpang Pulai-Lahat, 31300 Kampung Kepayang, Perak Darul Ridzuan.

#### SALES OFFICE

**PENANG** : ☎ +604-658 8817 ☎ +604-658 8818  
**IPOH** : ☎ +605-357 5818 ☎ +605-357 5818  
**KL** : ☎ +602-6277 3709 ☎ +603-6272 3760

#### Ezi TECHNICAL ADVISORY CENTRE

☎ +6012-431 8221 ✉ technical@ezi-fix.com

For more information please log on to: [www.ezi-fix.com](http://www.ezi-fix.com)