

MODULE 1
SCIENCE FORM 2
PAPER 1

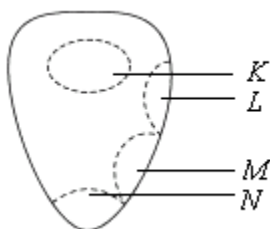
Each question is followed by four choices of answer. Choose the best answer for each question.

1. When we accidentally kick a stone, which type of receptor will be stimulated to send nerve impulse to the brain?
- A Touch receptor
 - B Pressure receptor
 - C Pain receptor
 - D All the receptors at the feet

2. Which of the following senses is **not** correctly matched with its sensory organ?

	<i>Sense</i>	<i>Sensory organ</i>
A	Hearing	Ear
B	Taste	Hand
C	Smell	Nose
D	Touch	Skin

3.



The above diagram shows the areas of the tongue which are sensitive towards a certain taste. A student tastes soap solution with his tongue. Among the areas labelled K, L, M and N, which will be stimulated?

- A K
 - B L
 - C M
 - D N
4. There is a class of food that consists of carbon, hydrogen, oxygen and nitrogen. Among the following, which is the function of the class of food mentioned, to human beings?
- A Main energy source
 - B Substance for building new cells
 - C Dissolves a certain vitamins in the body
 - D Protects the body against diseases

5. Among the following, which is **true** about vitamin?

- A Needed in a large quantity
- B Has a high energy value
- C Needed to prevent diseases
- D Needed to prevent the loss of water

6. Among the following, which is **not** true about the type of disease caused by the deficiency of a certain vitamin?

<i>Deficiency of vitamin</i>		<i>Disease</i>
A	C	Night blindness
B	D	Rickets
C	E	Miscarriage
D	K	Haemophilia

7. The following living things live in the same habitat **except**

- A cricket
- B centipede
- C earthworm
- D housefly

8. Which of the following pairs of organisms and their habitats is true?

<i>Organism</i>	<i>Habitat</i>
A Shark	River
B Lotus	Garden
C Cactus plant	Desert
D Crocodile	Pond

9.

- Non-woody stem
 - Fibrous roots
 - Parallel veins leaves

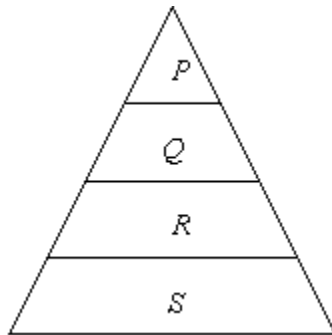
Which of the following plants has the above characteristics?

- A Mango tree
- B Durian tree
- C Balsam plant
- D Coconut tree

10. The study of the relationship of the interdependence between organisms with the Environment is known as

- A ecosystem
- B ecology
- C habitat
- D community

11. The population in the same habitat is
- A a group of organisms of the same species
 - B a group of organisms of different species
 - C a group of animals of the same species
 - D all the organisms and the non living things



12.

Which of the following represents *P*, *Q*, *R*, and *S* in the pyramid of numbers in the above figure?

	<i>P</i>	<i>Q</i>	<i>R</i>	<i>S</i>
A	Frog	Leaf	Snake	Caterpillar
B	Leaf	Caterpillar	Frog	Snake
C	Snake	Frog	Caterpillar	Leaf
D	Snake	Caterpillar	Frog	Leaf

13.

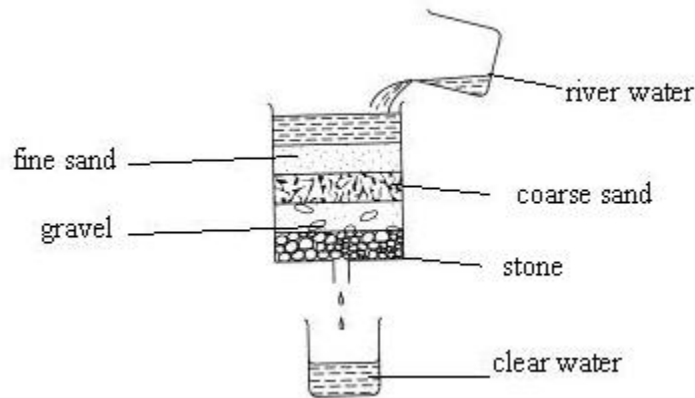
- ph value 6
- changes the colour of blue litmus paper into red
- does not change the colour of red litmus paper

The table above shows the test results of substance *X*. Among the following, which could possibly be substance *X*?

- A Toothpaste
- B Soap
- C Limewater
- D Lime juice

14. Among the following factors, which does **not** influence the rate of solubility?

- A Temperature of solvent
- B Size of solute particles
- C Mass of solute
- D Rate of stirring



15.

The diagram above shows a certain process of water purification. A student who drinks the clear water produced through that filtration process is later found having stomachache. Among the following, which explains the reason for that incident?

- A The clear water does not contain dissolved salt
- B There is still micro-organism in that clear water
- C There are still filthy substances in between the gaps of gravel and stone
- D River water has a lot of filthy substances

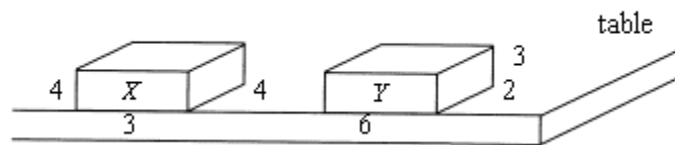
16. Among the following appliances, which does **not** work on the principle of air pressure?

- A Thermometer
- B Syringe
- C Suction hook
- D Drinking straw

17. Which of the following is **not** kept under high pressure?

- A Perfume
- B Hair spray
- C Tomato sauce
- D Insecticide

18.



Wooden blocks X and Y in the diagram above have the same mass and contact surface. Among the following forces, which exerts the same magnitude on both blocks?

- A Magnetic
- B Electric
- C Electrostatic
- D Frictional

19. Among the following pairs of organisms with their types of support, which is correct

	Organisms	Support
A	Caterpillar	Body fluid
B	Beetle	Body fluid
C	Durian tree	Turgidity of cell
D	Long bean	Woody stem

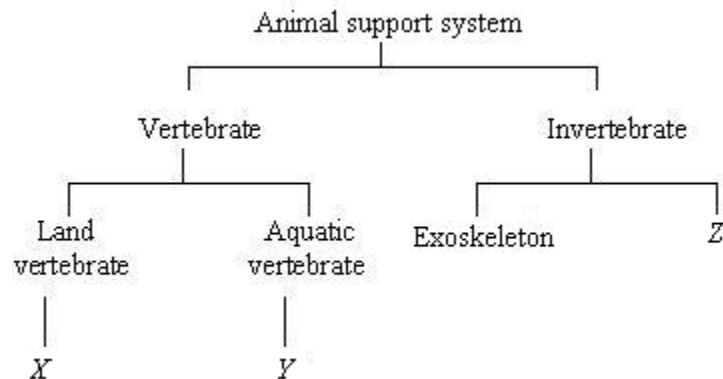
20. Among the following plants, which is not being supported by the turgidity of cells?

- A Balsam plant
- B Mango tree
- C Banana tree
- D Maize plant

21. Among the following, which supports the aquatic plants in the water?

- A Woody tissues
- B Turgidity of cell
- C Buoyant force of water
- D Buttress root

22.

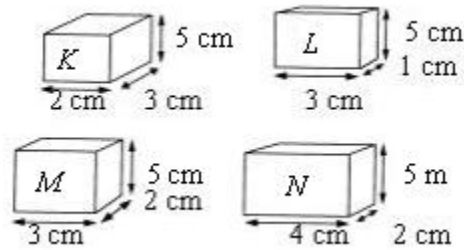


The diagram above shows the support system on vertebrates and invertebrates.

Among the following, which represents the support system for X, Y and Z?

- | X | Y | Z |
|------------------------|----------------------|----------------------|
| A Buoyancy of water | Hydrostatic skeleton | Endoskeleton |
| B Hydrostatic skeleton | Endoskeleton | Turgidity of cell |
| C Endoskeleton | Buoyancy of water | Hydrostatic skeleton |
| D Hydrostatic skeleton | Turgidity of cell | Buoyancy of water |

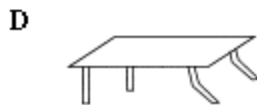
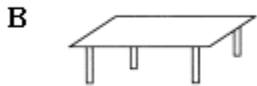
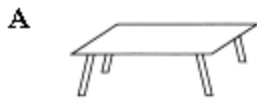
23.



The diagram above shows four wooden blocks, *K*, *L*, *M* and *N*. Those four blocks are put side by side on top of a plank. If the plank was tilted slowly, which wooden block will topple last?

- A *K*
- B *L*
- C *M*
- D *N*

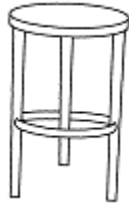
24. Among the following tables, which is the most stable?



25. What must be done to a racing car so that it will become more stable?

- A Lower the body of the car
- B Reduce the area of the base of the car
- C Use smaller tyres
- D Reduce the weight of the car

26.



The chair in the diagram above can be made more stable by

- A lengthening its legs
- B shortening its legs
- C changing the seat to a bigger one
- D increasing the weight of the seat

27. Among the following tools, which belongs to the same class of lever as a badminton racket?

- A Scissors
- B Paper cutter
- C Forceps
- D Bottle opener

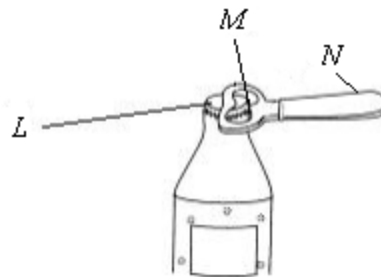
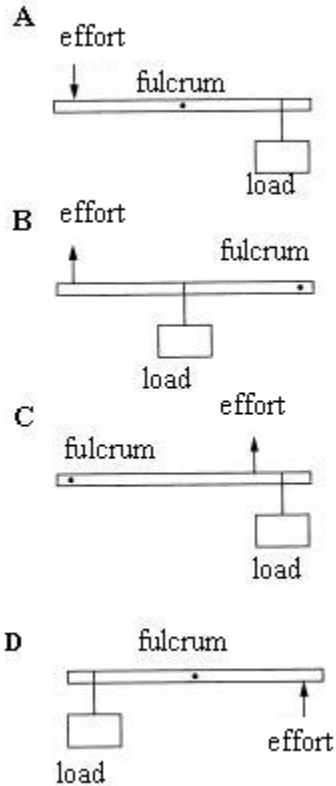
28.



Among the following tools, which is classified under the same class of lever as the tool shown in the diagram above?

- A Pliers
- B Wheelbarrow
- C Fishing rod
- D Bottle opener

29. Among the following, which correctly shows the model of the lever system for ice tongs?



30.

The diagram above shows a bottle opener that is being used to open the lid of a bottle. Among the following, which is correct?

	<i>Fulcrum</i>	<i>Effort</i>	<i>Load</i>
A	<i>L</i>	<i>N</i>	<i>M</i>
B	<i>N</i>	<i>L</i>	<i>M</i>
C	<i>M</i>	<i>L</i>	<i>N</i>
D	<i>N</i>	<i>M</i>	<i>L</i>

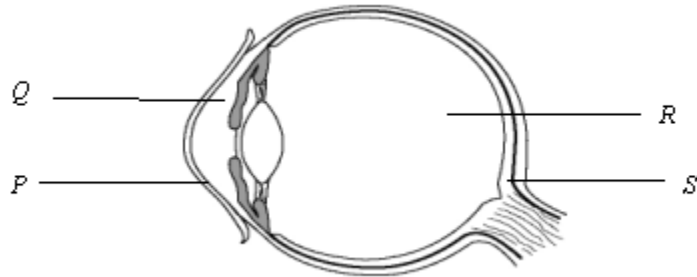
ANSWER

**MODULE 1
SCIENCE FORM 2
PAPER 1**

1. C
2. B
3. A
4. B
5. C
6. A
7. D
8. C
9. D
10. B
11. A
12. C
13. D
14. C
15. B
16. A
17. C
18. D
19. A
20. B
21. C
22. C
23. D
24. A
25. A
26. B
27. C
28. C
29. C
30. A

MODULE 1
SCIENCE FORM 2
PAPER 2

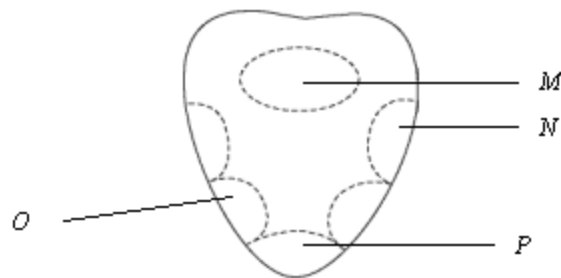
1.



The above figure shows the cross-section of the human eye.

- (a) Name the structures
- (i) *P* : _____ (iii) *R* : _____
- (ii) *Q* : _____ (iv) *S* : _____
- (b) What is the function of structures *Q* and *R*?
- _____
- (c) Which eye structure helps to refract and focus light on the retina?
- _____

2.



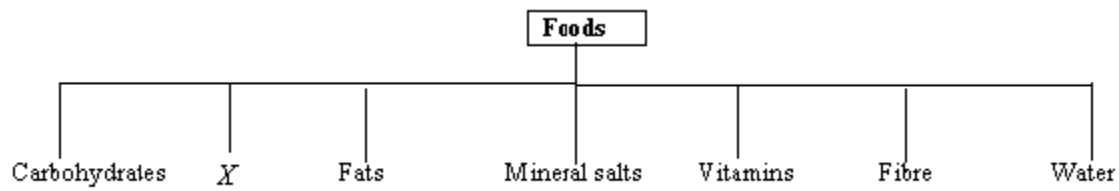
The above figure shows areas of the tongue that are sensitive to specific tastes.

- (a) State the area of the tongue that is sensitive to:
- (i) Salted fish _____ (ii) Honey _____
- (iii) Bitter gourd _____ (iv) Vinegar _____

(b) What dissolves the chemicals in food?

(c) State another type of sense that is closely related to the sense of taste.

3.



The above chart shows the classification of food classes.

(a) (i) What is food class X.

(ii) State **two** functions of food class X.

(b) Give **two** examples of carbohydrates.

(c) Which of the food classes is the main energy supplier for us?

(d) (i) What food should a person suffering from constipation eat more of?

ANSWER

MODULE 1 SCIENCE FORM 2 PAPER 2

- 1.** (a) (i) Cornea
(ii) Aqueous humour
(iii) Vitreous humour
(iv) Retina
- (b) helps to maintain the shape of the eye/helps to refract light onto retina
- (c) *P*, *Q* and *R*
- 2.** (a) (i) *O* (ii) *P* (iii) *M* (iv) *N*
- (b) Saliva
- (c) Sense of smell
- 3.** (a) (i) Proteins
(ii) builds new cells; repairs damaged tissues
- (b) Rice and bread/potatoes
- (c) Carbohydrates
- (d) (i) Food rich in fibre