

# proRZ – Mini Data Center 9.3

## MDC 9.3

- Air conditioning
- Equipment



## MDC 9.3

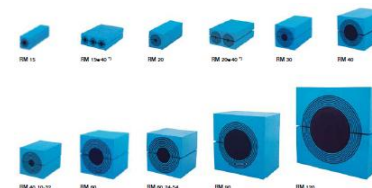


## Product features MDC 9.3

- Modular construction, racks will be installed at the customer's site
- Removable
- Possible installation during running operation of the IT
- Possible transportation in case of confined space conditions by means of modularity
- Extendable in case of growing IT

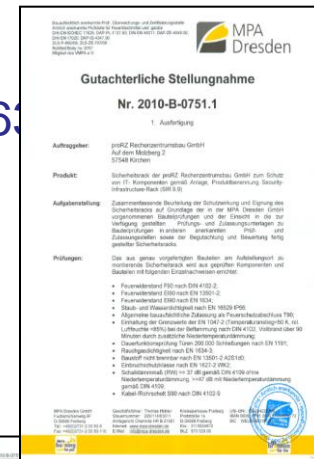
## Product features MDC 9.3

- Sandwich element with steel sheet on both sides,  
wall thickness: 91,2 mm.  
Housing colour: RAL 9010, doors RAL 5002, if required (ultramarine)
- Possible single racks or interlinkages
- Standard housing for 4 racks dimensions:
  - ✓ Rack HxWxD: 2200 mm (46 HU) x 800 mm x 1000 mm
  - ✓ Rack HxWxD: 2000 mm (42 HU) x 800 mm x 1000 mm
  - ✓ Rack HxWxD: 2200 mm (46 HU) x 800 mm x 1200 mm
  - ✓ Rack HxWxD: 2000 mm (42 HU) x 800 mm x 1200 mm
- Housings are available in any combination with double and single door systems
- Electronic or key lock available
- Soft or hard cable ducts available

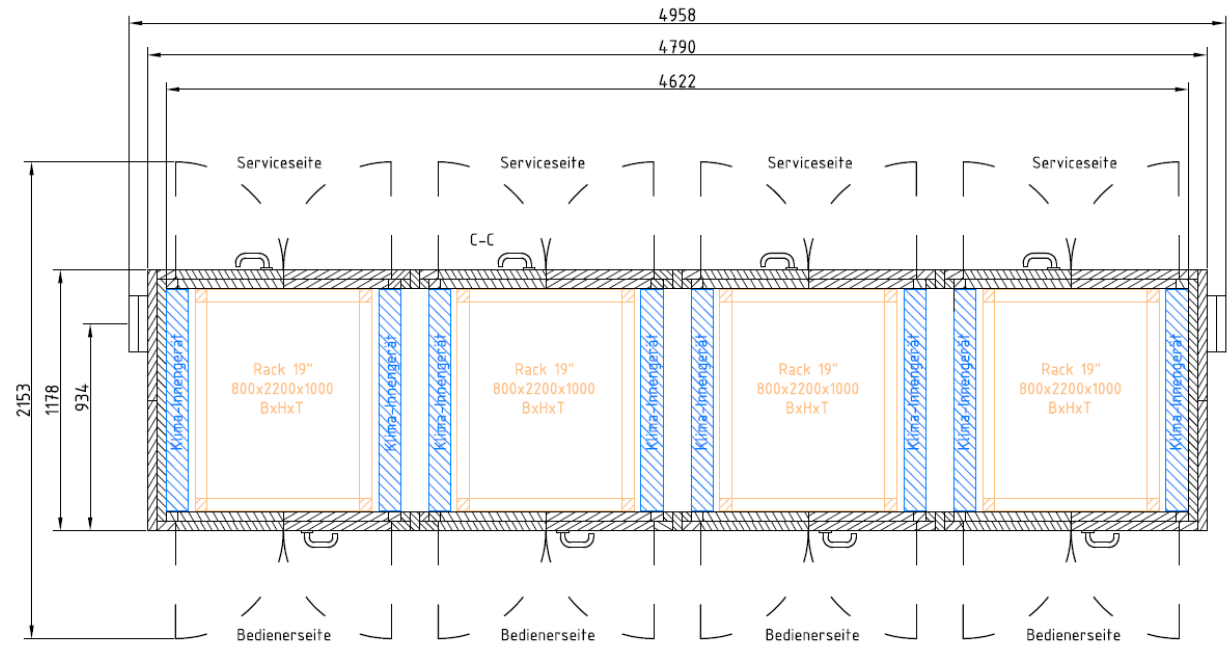
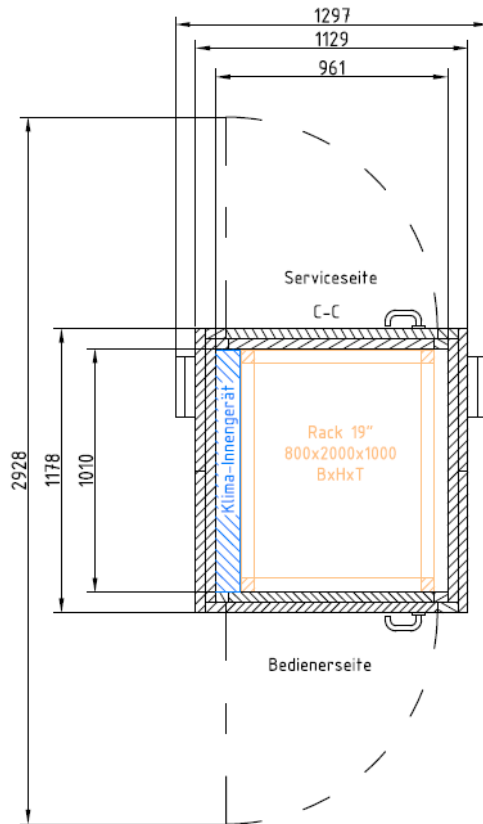


## Test certificates of MDC 9.3

- System-tested construction with F90 value according to 4102 and IE 90 according to EN 1363. Compliance within limits values for 30 minutes acc.to EN 1047-2
- Burglar protection WK II referring to EN 1627 / 1634
- Extinguishing water protection IP x 6 acc. to EN 60 529
- Dust cover IP 5x acc. to EN 60 529
- Smoke gas tightness acc.to EN 1634-3
- No EMC protection!



## Examples MDC 9.3



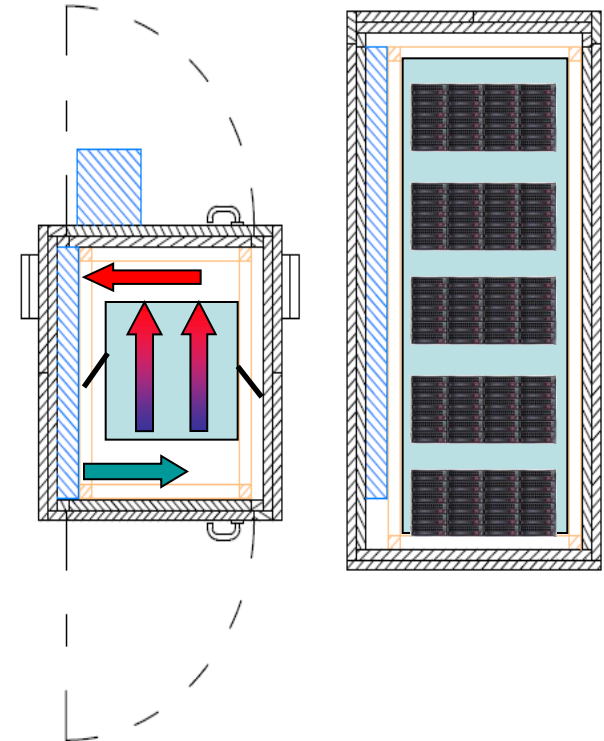


## Installation of MDC 9.3



## Air conditioning of MDC 9.3

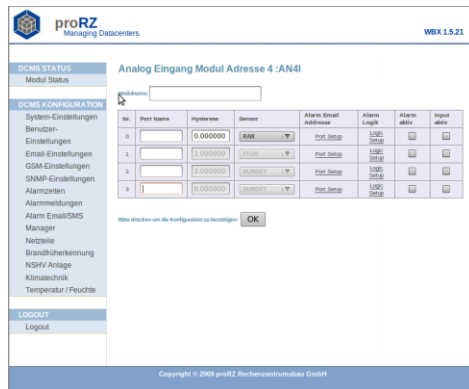
- Compact split units as indoor and outdoor solution
- Directed airflow – cooled and heated side
- Energy efficient – Savings of 20-30 %
- Power stages available from 2 to 8 KW
- **Redundancy up to 6 KW inside an indoor unit (competitive advantage!)**





## Monitoring for MDC 9.3

### Local network version



### Datacenter.proRZ.com



- Messages are loaded, processed and output
- Compact construction, 1 HU
- Standard configuration / modular adjustment
- Multiple redundancy (Power supply units/Inputs/Outputs).
- Redundant messaging and alarm concept



## Accessories for DCMS 1



Temperature sensor



Air humidity sensor



Water detector



Proximity detector



Smoke detector



Message distribution